

# COMPLETE HOME PACKAGE

Quality homes at affordable prices



## FOX

TOTAL AREA 245.7 SQM

WIDTH 14.8 METRES | DEPTH 21.7 METRES

MPZ Builders offer a wide range of home designs. Several have been designed specially for Zuccoli, Muirhead and North Crest to complement each of the estate's commitment to sustainability. All our designs are fully customisable or design your home to suit your budget and lifestyle all within a fixed priced contract and build time. Our aim is to provide you with a quality affordable home whilst giving you the flexibility in allowing changes design and finishes.

MPZ Builders is one of the Darwin's longest residential builders & developers. The company has been building high quality, family homes across Darwin since 1983 and enjoys an enviable reputation for excellence in construction and service provision. We ensure a pleasant, easy to deal with and offer a hassle free experience. They are renowned for their hands on approach to delivering quality homes on time and within budget.

As a local and family owned company, we understand our clients and their needs. Peter Zaroufis is a born and bred Territorian and his father has been in the Territory for 46 years. The builder's success of over 52 years combined experience, is a testament to its outstanding reputation and the high volume of referrals and repeat business. They strive to deliver high quality homes at competitive prices to clients with a range of tastes and styles. After all, your Home is our Reputation.

MPZ Builder's display homes showcase the unique features and superior inclusions that set its homes apart from those of all its competitors.

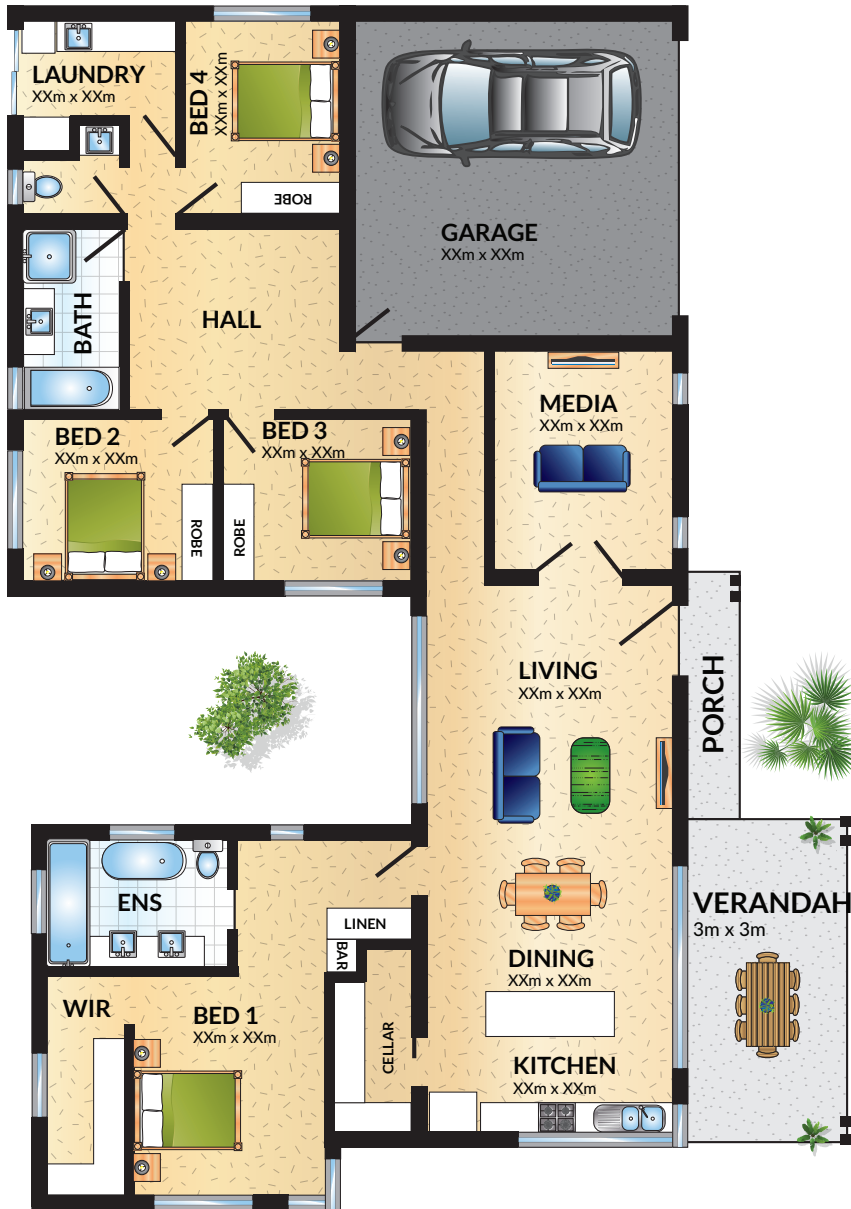
Visit the display homes at 25 Banksia Street, Zuccoli or 22 Rueben Avenue, Berrimah.

**PETER@MPZBUILDERS.COM**  
**0438 270 115**  
**WWW.MPZBUILDERS.COM**



### STANDOUT FEATURES

- ✓ Complete ready to move in, no hidden extras, set price contracts
- ✓ Solid concrete walls through out, quality smooth rendering
- ✓ Fujitsu split system inverter air conditioning
- ✓ Energy efficient LED lighting through out
- ✓ Opulent kitchen packed with extra's including soft close draws and cupboards
- ✓ Stone bench tops through out kitchen, bathrooms and laundry
- ✓ Gorgeous 300 x 600mm tiles in bathrooms
- ✓ Quality 600 x 600mm porcelain tiles through out
- ✓ Security screens
- ✓ Exposed aggregate driveways and 800mm mowing strip
- ✓ Superior quality control during construction
- ✓ All plans are fully customisable



## FOX

TOTAL AREA	245.7m <sup>2</sup>
LIVING	185m <sup>2</sup>
GARAGE	38.3m <sup>2</sup>
PORCH	4.4m <sup>2</sup>
VERANDAH	18m <sup>2</sup>

WIDTH **14.8 METRES**  
DEPTH **21.7 METRES**

### ENERGY STAR RATING

